

PEELMASTER PM-01v3

Automatic Mylar Sheet Remover



beyond thinking.

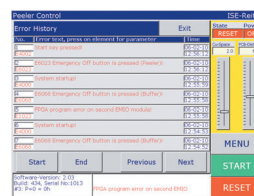
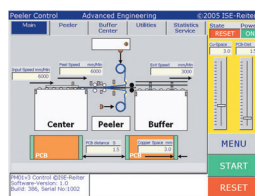
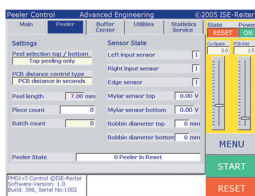
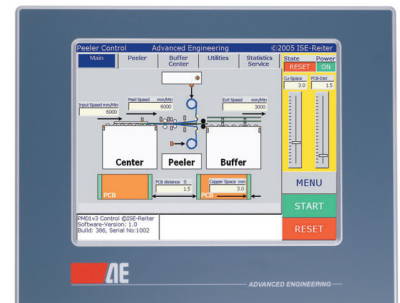
COMPACT, DURABLE AND FULLY-AUTOMATED,
THE PEELMASTER PM-01'S SPEED AND QUALITY
GIVES NEW MEANING TO HIGH PERFORMANCE.



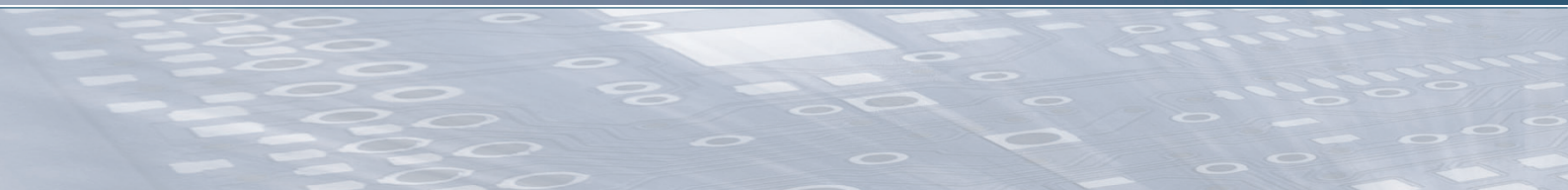
The main cabinet can be pulled out, providing easier accessibility for set-up and maintenance.

easy to operate → THE CONTROL PANEL

The integrated 8.4" SVGA Touch Screen is straightforward and easy to operate, providing constant updates about the system's performance.



easy to operate



What are the skills

MAJOR FEATURES

The Advanced Peeling System

- Advanced peeling system does not create film chips or damages on the board
- Does not require an unexposed leading edge so it saves copper space
- Highest productivity up to 9 meter per minute
- No adjustments required due to varying changes in panel sizes or thickness
- Suitable for 0.025 mm thickness of cores

Coreless take up reel

- Peeled Mylar films are welded onto previous films and rolled up automatically
- Reduces waste volume down to 3% of conventional peeling or competitive
- Reduces waste handling of operators and no static build up or shocks

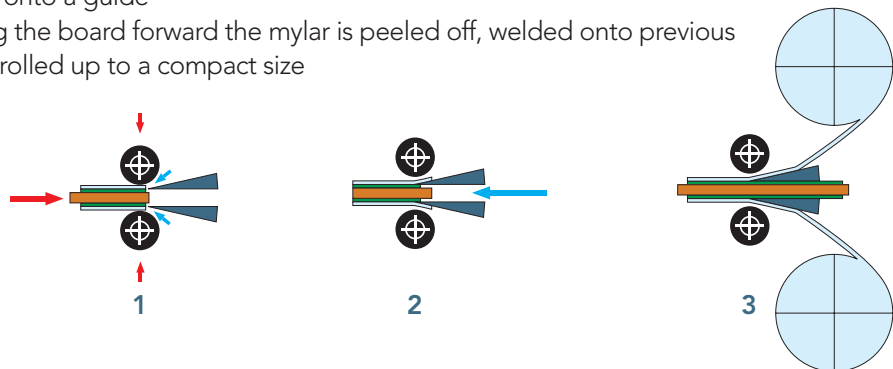
Process reliability

- Eliminate handling defects such as bent corners, film chips and particles
- Continuous throughput and processing without stopping the board
- Typical failure rate is less than 2 per 1000 panels
- Worldwide more than 100 units installed

How does it work

THE TECHNICAL PRINCIPLE

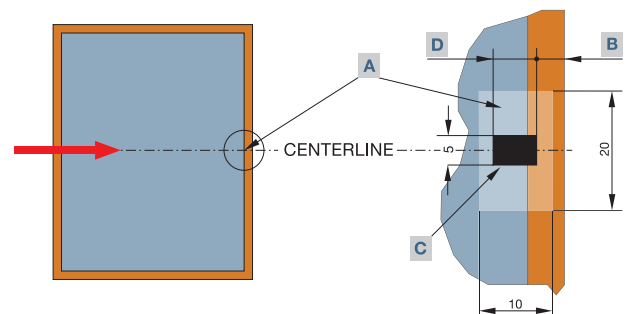
- 1 The leading edge of the board is detected by a sensor and a Peeling wheel top and bottom and a small blast of air loosens the edge of the Mylar
- 2 An additional blast of air separates the Mylar from the board top and bottom and lifts it onto a guide
- 3 By moving the board forward the mylar is peeled off, welded onto previous ones and rolled up to a compact size



What do you need

REQUIREMENTS

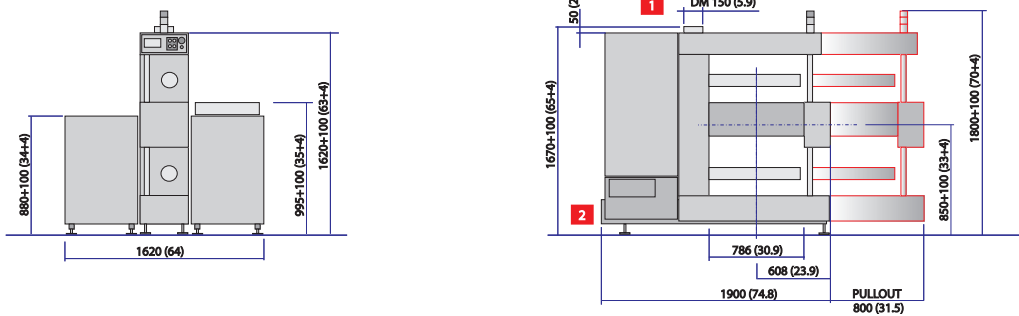
- A** Peeling Area
 - Must be free of any holes
- B** Peeling Start Point
 - Adjustable from 0 - 20 mm
- C** Peeling Touch
 - Does not cause damages
- D** Peeling Touch
 - Adjustable from 3 - 10 mm



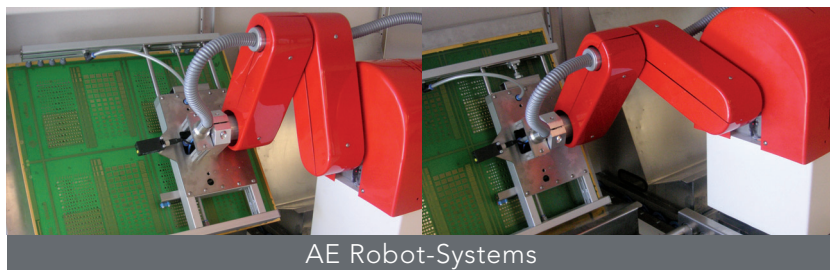
Basic Specifications

Board Length	250mm – 650mm
Board Width	350mm – 650mm
Board Thickness	0.025mm (without Cu) – 4.0mm (including Cu)
Peeling Speed	Adjustable from 1 to 9m/min
Take-up reel Capacity	Approx. 450m Polyester-Film
Working Direction	Left to Right or Right to Left
Power Supply	200V/230V/240V AC 50/60Hz
Rated Power	1.5kW
Air Pressure	6 bar
Exhaust	200m ³ /hr
Equipped with	Centering Device CD600 / Buffer Device BD600

System Overview



Further AE Products



AE Robot-Systems

Have a look at our website for further detailed information.



www.advanced-engineering.at

ADVANCED ENGINEERING INDUSTRIE AUTOMATION GMBH
Neualmerstrasse 37 · 5400 Hallein · Austria/Europe · Tel +43 (0) 6245 70 7 93 · office@advanced-engineering.at

Specifications are subject to change without prior notice. 11/2006
© 2006 by advanced engineering industrie automation gmbh · all rights are reserved