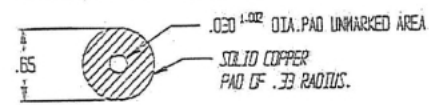


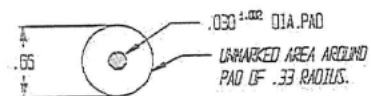
*Express
to Steven Jackson 2: SkKobing*

"T" OPTICAL TARGET (2 REQ'D)



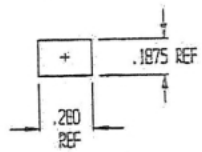
TARGET ON **-A-** ONLY; CLEAR AREA OPPOSITE SIDE
"T" TARGETS ON TOP SIDE OF PANEL.
 TOP CAMERA WITH SAME SIDE LIGHTING USED.

"T1" OPTICAL TARGET (2 REQ'D)

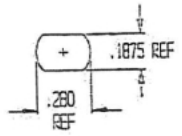


TARGET ON **-B-** ONLY; CLEAR AREA OPPOSITE SIDE
"T1" TARGETS ON BOTTOM SIDE OF PANEL.
 BOTTOM CAMERA WITH BACKLIGHTING USED.

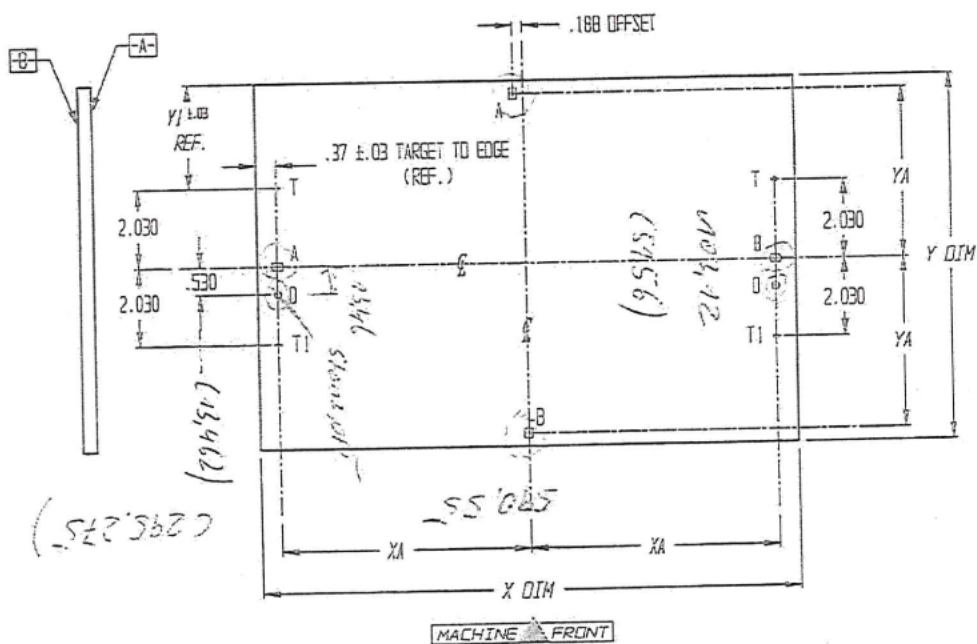
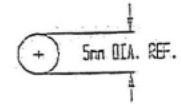
"A" RECTANGULAR SLOT (2 REQ'D)



"B" FLATTED ROUND SLOT (2 REQ'D)



"O" ROUND HOLE (2 REQ'D)



PANEL SIZE XorY DIM	SLOT LOCATION		EDGE LOCATION
	XA	YA	YI
12.00	-----	5.625	3.97
18.00	8.625	8.625	6.97
24.00	11.625	-----	-----

NOTE:
 THE TARGET TO EDGE DIMENSION AND THE "YI" DIMENSION,
 MUST BE MAINTAINED FOR ALL PANEL SIZES TO
 FACILITATE LOADING OF PANEL.

COPYRIGHT MULTILINE TECHNOLOGY
 NOTICE: PROPRIETARY INFORMATION
 PROPERTY OF MULTILINE TECHNOLOGY
 INFORMATION CONTAINED HEREIN IS NOT
 DISCLOSED TO OTHERS WITHOUT
 PRIOR WRITTEN APPROVAL OF MULTILINE
 TECHNOLOGY.

TOLERANCES:
 .xxx ±.001
 .xx ±.02
 CUSTOMER:
 JOB NUMBER:

DR. BY: P. CERRITTI
 DATE: 1/14/2002
 CHKD:
 APPD:

MULTILINE TECHNOLOGY 400 Broadhollow rd. Farmingdale, N.Y. 11735
 PART NAME:
DPE-VALULINE SPECIAL 4 CAMERA LAYOUT
 SIZE: g CNG. NO.: APO-0415 REV: B

*06.02.08/lin
Kobing*