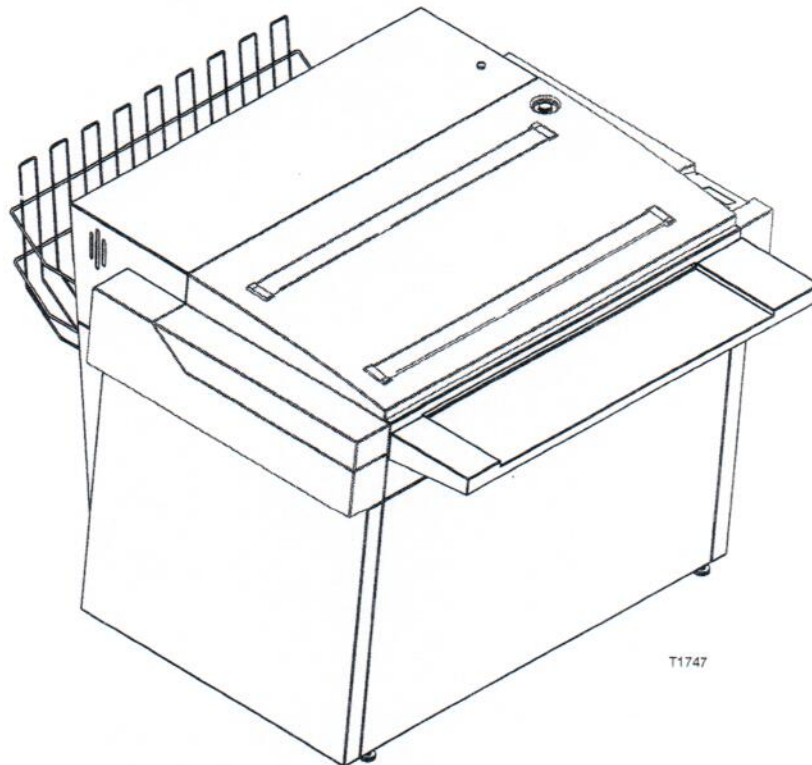


# AgfaLine 86HT



T1747

This manual is for Service Technicians only and the directions given must not be followed by unauthorized personnel. Always read the **Safety Instruction Manual part No 21741** before starting up the equipment and keep it with the machine for reference at all times.

## PROCESSING MATERIALS

### PROCESSING MATERIALS

- Rapid access.
- Hard dot materials.
- Imagesetting films and papers.
- Daylight films.
- Repro films.
- **Some models only:** Polyester plates. See below.
- **Some models only:** PCB materials. See below.

### POLYESTER MATERIALS

**NOTE! Some models only**

Some processors are specially designed for developing of polyester materials.

Special technical information and specifications regarding "polyester" processors will be described separately throughout the manual.

### "PCB" PROCESSORS

**NOTE! Some models only.**

Some processors are specially designed for PCB productions.

Special technical information and specifications regarding "PCB" processors will be described separately throughout this manual.

### FILM WIDTH

|                       |                   |              |
|-----------------------|-------------------|--------------|
| <b>Model 55 (21):</b> | 10.0 cm - 55.0 cm | (4" - 21.7") |
| <b>Model 72 (28):</b> | 10.0 cm - 72.5 cm | (4" - 28.5") |
| <b>Model 86 (34):</b> | 10.0 cm - 86.5 cm | (4" - 34.0") |

### FILM LENGTH

#### SHEET AND ROLL MATERIAL:

Min.-max.: 12.0 cm - 30.0 m (4.7" - 1181.1")

#### POLYESTER MATERIAL:

Min.-max.: 20.0 cm - 3.0 m (7.9" - 118.1")

#### PCB MATERIAL:

**NOTE! Some models only.**

**Model 55 (21):** Not available

**Model 72 (28):** Max. 96 cm (37.8")

**Model 86 (34):** Max. 110 cm (43.3")

### FILM THICKNESS

#### SHEET AND ROLL MATERIAL:

Min.-max.: 0.08 mm - 0.2 mm (0.003" - 0.008")

#### POLYESTER MATERIAL:

**NOTE! Some models only.**

See Appendix A "FILM THICKNESS, POLYESTER MATERIAL".

#### PCB MATERIAL:

**NOTE! Some models only.**

Min.-max.: 0.01 cm - 0.2 mm (0.004" - 0.008")



**SPECIFICATIONS SPEED**

**MODEL 55/72/86 AND 21/28/34**

**DEV. TIME**

10 - 60 sec.

**TRANSPORT SPEED**

33 - 198 cm/min. (13-78"/min.)

**DRY-TO-DRY TIME**

42 - 253 sec.  
84 sec. at 20 sec. developer time.

**CONVERSION TABLE**

| Dev. time in sec. | Transport speed cm/min. (in/min.) | Dry-to-dry in sec. |
|-------------------|-----------------------------------|--------------------|
| 60                | 33.0 (13.0)                       | 253                |
| 55                | 36.0 (14.2)                       | 232                |
| 50                | 39.6 (15.6)                       | 211                |
| 45                | 44.0 (17.3)                       | 190                |
| 40                | 49.5 (19.5)                       | 169                |
| 35                | 56.6 (22.3)                       | 148                |
| 30                | 66.0 (26.0)                       | 127                |
| 25                | 79.2 (31.2)                       | 106                |
| 20                | 99.0 (39.0)                       | 84                 |
| 15                | 132.0 (52.0)                      | 63                 |
| 10                | 198.0 (78.0)                      | 42                 |

**MODEL 72/86 PCB AND 28/34 PCB**

**DEV. TIME (PCB)**

20 - 120 sec.

**TRANSPORT SPEED (PCB)**

16,5 - 99 cm/min. (6,5 - 39"/min.)

**DRY-TO-DRY TIME (PCB)**

84 - 506 sec.  
338 sec. at 80 sec. developer time.

**CONVERSION TABLE (PCB)**

| Dev. time in sec. | Transport speed cm/min. (in/min.) | Dry-to-dry in sec. |
|-------------------|-----------------------------------|--------------------|
| 120               | 16.5 (6.5)                        | 506                |
| 115               | 17.5 (6.9)                        | 485                |
| 110               | 18.0 (7.1)                        | 464                |
| 105               | 19.0 (7.5)                        | 443                |
| 100               | 19.8 (7.8)                        | 422                |
| 95                | 20.9 (8.2)                        | 401                |
| 90                | 22.0 (8.7)                        | 380                |
| 85                | 23.4 (9.2)                        | 359                |
| 80                | 27.8 (9.7)                        | 338                |
| 75                | 26.5 (10.4)                       | 317                |
| 70                | 28.3 (11.1)                       | 296                |
| 65                | 30.7 (12.1)                       | 274                |
| 60                | 33.0 (13.0)                       | 253                |
| 55                | 36.0 (14.2)                       | 232                |
| 50                | 39.6 (15.6)                       | 211                |
| 45                | 44.0 (17.3)                       | 190                |
| 40                | 49.5 (19.5)                       | 169                |
| 35                | 56.6 (22.3)                       | 148                |
| 30                | 66.0 (26.0)                       | 127                |
| 25                | 79.2 (31.2)                       | 106                |
| 20                | 99.0 (39.0)                       | 84                 |

## SPECIFICATIONS MECHANICAL

### TANK CAPACITIES

|                     |       |        |               |
|---------------------|-------|--------|---------------|
| <b>Model 55/21:</b> | Dev:  | 15.5 l | (4.1 US gal.) |
|                     | Fix:  | 15.5 l | (4.1 US gal.) |
|                     | Wash: | 14.0 l | (3.7 US gal.) |
| <b>Model 72/28:</b> | Dev:  | 18.5 l | (4.9 US gal.) |
|                     | Fix:  | 18.5 l | (4.9 US gal.) |
|                     | Wash: | 17.0 l | (4.5 US gal.) |
| <b>Model 86/34:</b> | Dev:  | 21.5 l | (5.7 US gal.) |
|                     | Fix:  | 21.5 l | (5.7 US gal.) |
|                     | Wash: | 20.0 l | (5.3 US gal.) |

Tank capacities listed above do not include contents of circulation systems and filters.

### TEMPERATURES

|         |           |               |
|---------|-----------|---------------|
| Dev :   | 20 - 40°C | (68 - 122° F) |
| Fix :   | 20 - 40°C | (68 - 122° F) |
| Dryer : | 30 - 60°C | (86 - 140° F) |

### HOSE CONNECTIONS

|                            |  |            |
|----------------------------|--|------------|
| <b>Water supply:</b>       | 12 mm reinforced hose<br>(3/4" or 1/2" male thread)        |            |
|                            | Water hose and fittings are delivered with the processor.  |            |
| <b>Drains:</b>             | Dev:   | 25 mm (1") |
|                            | Fix:   | 25 mm (1") |
|                            | Wash:  | 25 mm (1") |
|                            | Drain hoses and fittings are delivered with the processor. |            |
| <b>Dryer, Air exhaust:</b> | 100 mm   | (4")       |

### WATER SUPPLY

|                     |             |                 |
|---------------------|-------------|-----------------|
| <b>Consumption:</b> |             |                 |
| in operate:         | 3.3 l/min   | (0.9 gal./min.) |
| in stand-by:        | 0.0 l/min   | (0.0 gal./min.) |
| <b>Pressure:</b>    | 1.5 - 4 bar | (22 - 60 psi)   |
| <b>Temperature:</b> | 5-40°C      | (41-104°F)      |

**CAUTION!** Water pressure must not exceed 6 bar (87 psi).

### DEVELOPER FILTER

|   |                     |                           |
|---|---------------------|---------------------------|
| Some models are equipped with a developer filter. |                     |                           |
| Type:   | 5 micron filter.    |                           |
| Average lifetime:                                 |                     |                           |
| <b>Model 55/21:</b>                               | 1000 m <sup>2</sup> | (10,764 ft <sup>2</sup> ) |
| <b>Model 72/28:</b>                               | 1000 m <sup>2</sup> | (10,764 ft <sup>2</sup> ) |
| <b>Model 86/34:</b>                               | 1000 m <sup>2</sup> | (10,764 ft <sup>2</sup> ) |

Default setting is 1000 m<sup>2</sup>.  
Setting range is 0 m to 1500 m<sup>2</sup>.

### FIXER FILTER

|   |                     |                           |
|---|---------------------|---------------------------|
| Some models are equipped with a fixer filter. |                     |                           |
| Type:   | 5 micron filter.    |                           |
| Average lifetime:                             |                     |                           |
| <b>Model 55/21:</b>                           | 1000 m <sup>2</sup> | (10,764 ft <sup>2</sup> ) |
| <b>Model 72/28:</b>                           | 1000 m <sup>2</sup> | (10,764 ft <sup>2</sup> ) |
| <b>Model 86/34:</b>                           | 1000 m <sup>2</sup> | (10,764 ft <sup>2</sup> ) |

Default setting is 1000 m<sup>2</sup>.  
Setting range is 0 m to 1500 m<sup>2</sup>.

### NOISE LEVEL

|              |             |
|--------------|-------------|
| In operate:  | < 70 dB (A) |
| In stand-by: | < 70 dB (A) |

### WEIGHT

See Appendix A.

### SILVER RECOVERY UNIT

**NOTE!** Some models only.

See separate manual for technical specifications.



**SPECIFICATIONS ELECTRICAL**

**POWER SUPPLY**

**EUR-MODELS:**

- 3 x 230/400V AC + N + PE, 50-60 Hz, fused by 3 x 16 A.
- 1 x 230V AC + N + PE, 50-60 Hz, fused by 1 x 25 A. Alternatively fused by 1 x 16A with power share set to ON. See below.

**USA-MODELS:**

- 230V AC, single phase + PE, 50-60 Hz, fused by 30 A or 50 A.
- 3 x 230V AC + PE, 50-60 Hz, fused by 3 x 30 A (USA), or

**POWER SHARE**

**CAUTION! If the processor is supplied by 1 x 230V AC + N + PE and fused by 1 x 16A, the power share option must be to ON.**

The power share function is set to ON in "CONFIGURATION" - see the "FMA Service Information" manual.

The power share function reduces the max power consumption by prioritizing the need for power:

**In Stand-by mode**

1. Priority: Dev heat
2. Priority: Fix heat
3. Priority: Dry heat

**In processing mode**

1. Priority: Dry heat
2. Priority: Dev heat
3. Priority: Fix heat

Please be aware that the power share mode may reduce specifications, depending on

- voltage
- ambient temperatur and humidity
- replenish temperature and volume
- max processing length

reduced specifications will be app. 20 sec. dev time and 50°C drying temperature.

It will however still be possible to set the processor to ex. 10 sec. dev time, if processing sheets only or with limited replenish.

**VOLTAGE TOLERANCES**

230V +10% / -14%

**POWER CONSUMPTION**

(At 230V)

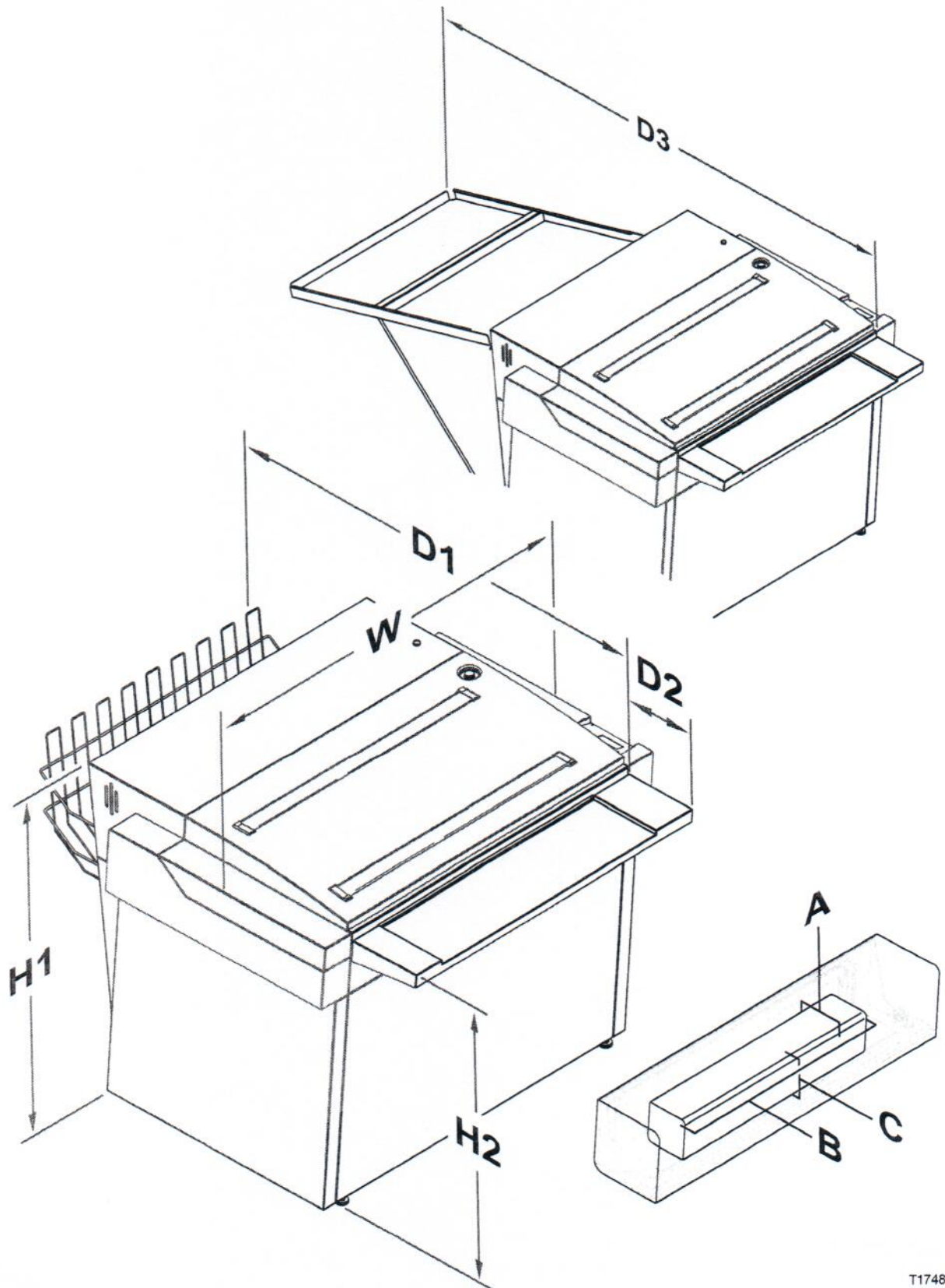
Max.: 5200 Watt (normal)  
 or  
 3100 Watt (power share)

**POWER CORD WITH INLINE GFCI RELAY**

See Appendix A.

550, 720, 860  
55/21, 72/28, 86/34

# FILM PROCESSOR



T1748

**DIMENSIONS**

**DIMENSIONS PROCESSOR**

See figure opposite

**Model 55/21:**

|              |   |                |
|--------------|---|----------------|
| Width (W):   | 101 cm                                  | (39.7")        |
| Depth (D1):  | 142 cm (incl. film basket)              | (55.9")        |
|              | 103 cm (excl. film basket)              | (40.6")        |
| Depth (D2):  | Feed table 25 cm                        | (9.8")         |
|              | Daylight cassette 23 cm                 | (9.1")         |
| Depth (D3):  | Feed tray not available for this model. |                |
| Height (H1): | 107 - 109 cm                            | (42.1-42.9")   |
|              | incl. adjustable legs                   |                |
| Height (H2): | 96 - 98 cm                              | (37.8 - 38.6") |
|              | incl. adjustable legs                   |                |

**Model 72/28:**

|              |                            |                |
|--------------|----------------------------|----------------|
| Width (W):   | 119 cm                     | (46.9")        |
| Depth (D1):  | 142 cm (incl. film basket) | (55.9")        |
|              | 103 cm (excl. film basket) | (40.6")        |
| Depth (D2):  | Feed table 25 cm           | (9.8")         |
|              | Daylight cassette 33 cm    | (13.0")        |
| Depth (D3):  | 187 cm (incl. film tray)   | (73.6")        |
|              | 103 cm (excl. film tray)   | (40.6")        |
| Height (H1): | 107 - 109 cm               | (42.1-42.9")   |
|              | incl. adjustable legs      |                |
| Height (H2): | 96 - 98 cm                 | (37.8 - 38.6") |
|              | incl. adjustable legs      |                |

**Model 86/34:**

|              |                            |                |
|--------------|----------------------------|----------------|
| Width (W):   | 133 cm                     | (52.4")        |
| Depth (D1):  | 142 cm (incl. film basket) | (55.9")        |
|              | 103 cm (excl. film basket) | (40.6")        |
| Depth (D2):  | Feed table 25 cm           | (9.8")         |
|              | Daylight cassette 23 cm    | (9.1")         |
| Depth (D3):  | 226 cm (incl. film tray)   | (89.0")        |
|              | 103 cm (excl. film tray)   | (40.6")        |
| Height (H1): | 107 - 109 cm               | (42.1-42.9")   |
|              | incl. adjustable legs      |                |
| Height (H2): | 96 - 98 cm                 | (37.8 - 38.6") |
|              | incl. adjustable legs      |                |

**DIMENSIONS PTS CASSETTES**

See figure opposite

The max. dimensions of the PTS cassettes that fit into the daylight cassette (option) are:

**Model 55/21:**

|             |        |         |
|-------------|--------|---------|
| Depth (A):  | 195 mm | ( 7.7") |
| Width (B):  | 716 mm | (28.2") |
| Height (C): | 195 mm | ( 7.7") |

**Model 72/28:**

|             |        |          |
|-------------|--------|----------|
| Depth (A):  | 295 mm | ( 11.6") |
| Width (B):  | 891 mm | (35.1")  |
| Height (C): | 195 mm | ( 7.7")  |

**Model 86/34:**

|             |         |         |
|-------------|---------|---------|
| Depth (A):  | 195 mm  | ( 7.7") |
| Width (B):  | 1031 mm | (40.6") |
| Height (C): | 195 mm  | ( 7.7") |